

# Climate Resilient and Inclusive Cities

[www.resilient-cities.com](http://www.resilient-cities.com)





# CRIC: Climate, Resilient and Inclusive Cities Program



- EU funded project spanning 5 years. [www.resilient-cities.com](http://www.resilient-cities.com)
- A long lasting and unique collaboration through a triangular cooperation between cities and research centres in Europe, South Asia (India), and Southeast Asia (Indonesia and other countries).
- The Project will also contribute to sustainable integrated urban development, good governance, and climate adaptation/mitigation through long lasting partnerships, and tools such as sustainable local action plans, early warning tools, air quality and waste management in consultation with experts' panels.





## PARTNERS



International network of cities and regions, ACR+ works on optimizing the lifecycle of products through reusing, recycling and better waste management. For the CRIC, ACR+ identified the priority challenges in the pilot cities and dealt with waste management.



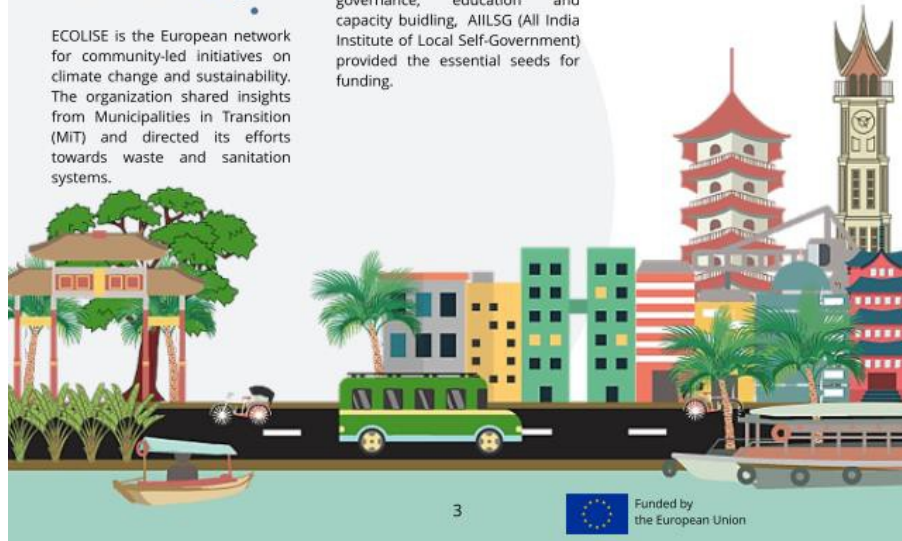
Fortified by 93 years of experience hand in hand with Indian local authorities on fields such as urban governance, education and capacity building, AILSG (All India Institute of Local Self-Government) provided the essential seeds for funding.



Important actor in climate change research, the Gustave Eiffel University in Paris has significantly contributed to research on flooding and early warning systems (EWS), adopting a holistic approach enriched by empirical data collected on the field.



ECOLISE is the European network for community-led initiatives on climate change and sustainability. The organization shared insights from Municipalities in Transition (MiT) and directed its efforts towards waste and sanitation systems.



## PARTNERS



The United Cities and Local Governments Asia Pacific is a global association that supports cooperation between local governments and other international communities in the Asia-Pacific region. Leader of the project, the UCLG ASPAC played a key role as knowledge management hub on local governments.



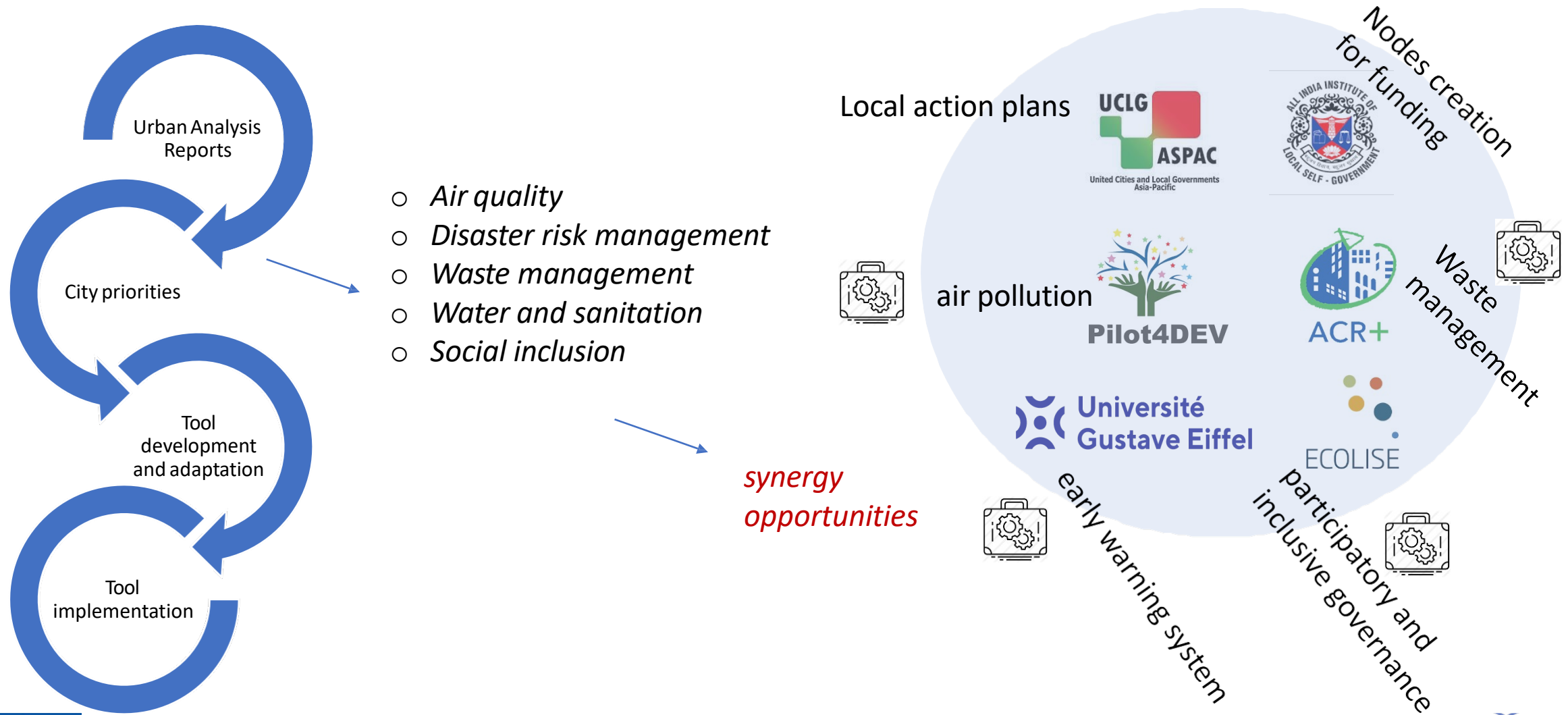
The European Union has provided indispensable funding through the Team Europe package on humanitarian and environmental issues: poverty reduction, refugee crisis, capacity building... A total sum of 3.2 million euros has been allocated for the CRIC project.



Pilot4DEV is a Brussels-based network organization that connects different stakeholders. Their multidisciplinary approach deals with various areas such as knowledge exchange, the SDGs, governance, women's rights or resilience. Pilot4DEV offered their expertise in air pollution, coastal restoration and sustainable urban design.



# Tools development within the CRIC project

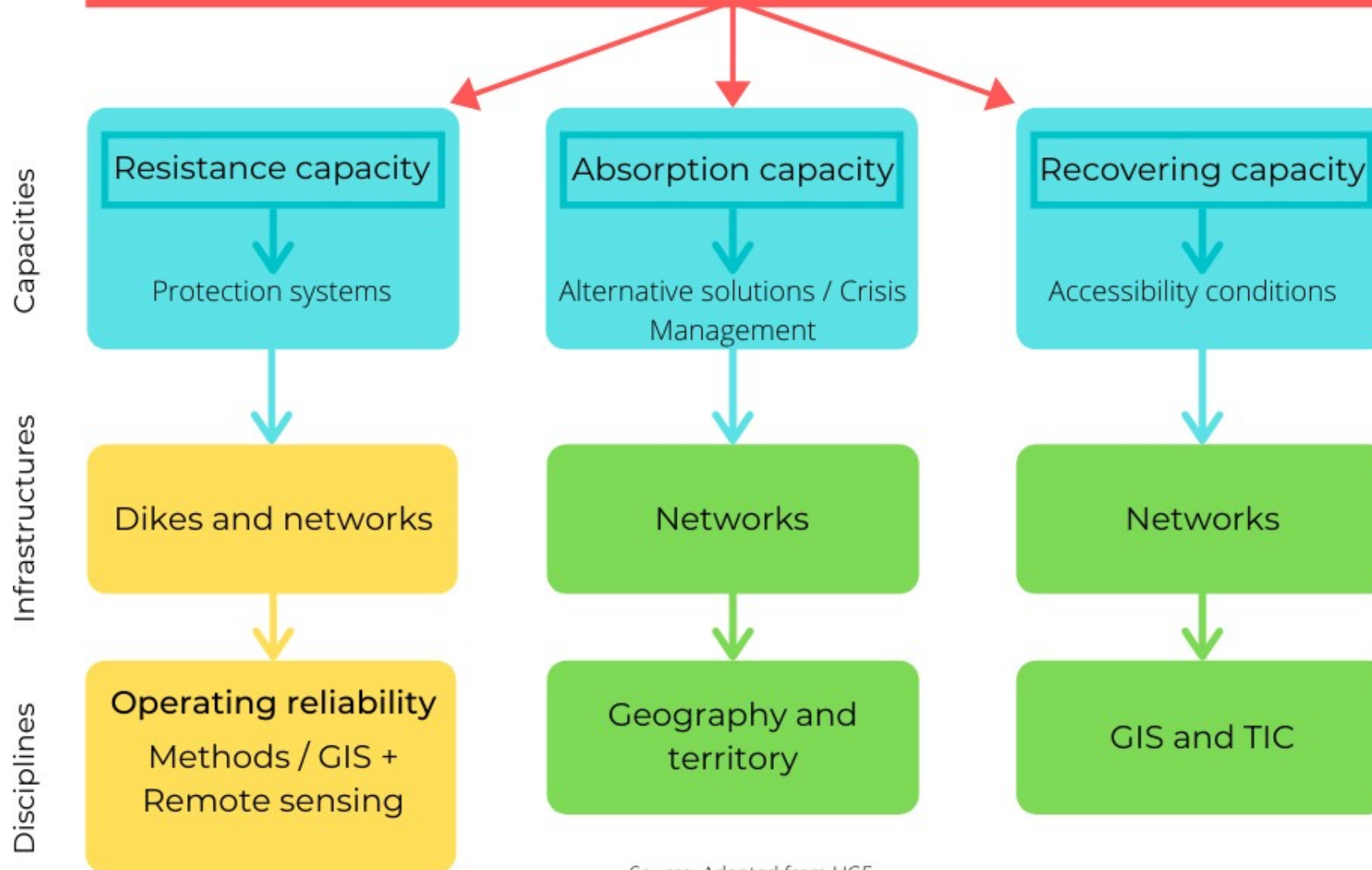


Co-funded by the European Union



CLIMATE  
RESILIENT  
AND INCLUSIVE  
CITIES

# Urban resilience = 3 pillars and several steps



Source: Adapted from UGE



# Urban Resilience, a Multi-disciplinary concept





Co-funded by the European Union



United Cities and Local Governments Asia-Pacific

## PILOT CITIES

Pilot cities



**Pekanbaru**  
Pekanbaru



**Pangkal Pinang**  
Pangkal Pinang



**Bandar Lampung**  
Bandar Lampung



**Cirebon**  
Cirebon



**Banjarmasin**  
Banjarmasin



**Samarinda**  
Samarinda



**Mataram**  
Mataram



**Kupang**  
Kupang



**Gorontalo**  
Gorontalo



**Ternate**  
Ternate





Banjarmasin - "City of a thousand rivers" – wooden stilt houses line many rivers that cross the City







Tidal floods, residential fires, and GHG emissions: 3 key disaster & climate change issues that plague Banjarmasin





Improving the rivers:  
a high priority for  
Banjarmasin

<https://banjarmasin.tribunnews.com/>



<https://sijaka.wordpress.com/>



Samarina - "As low as the river" – City sits on low land at a bend of the Mahakam River

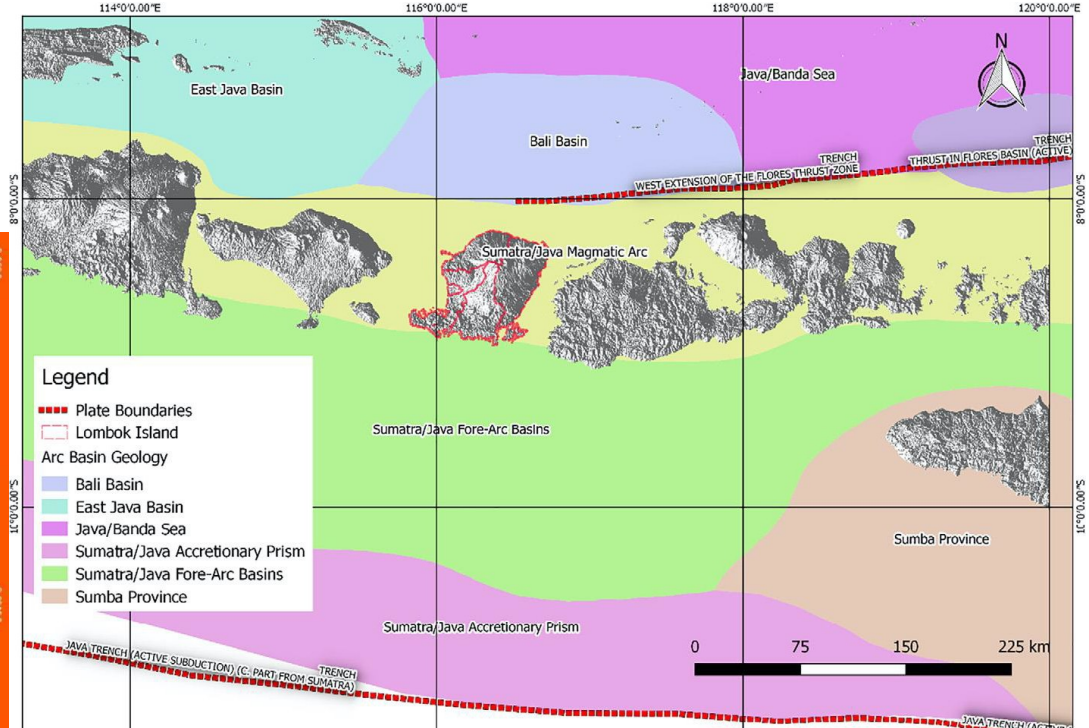
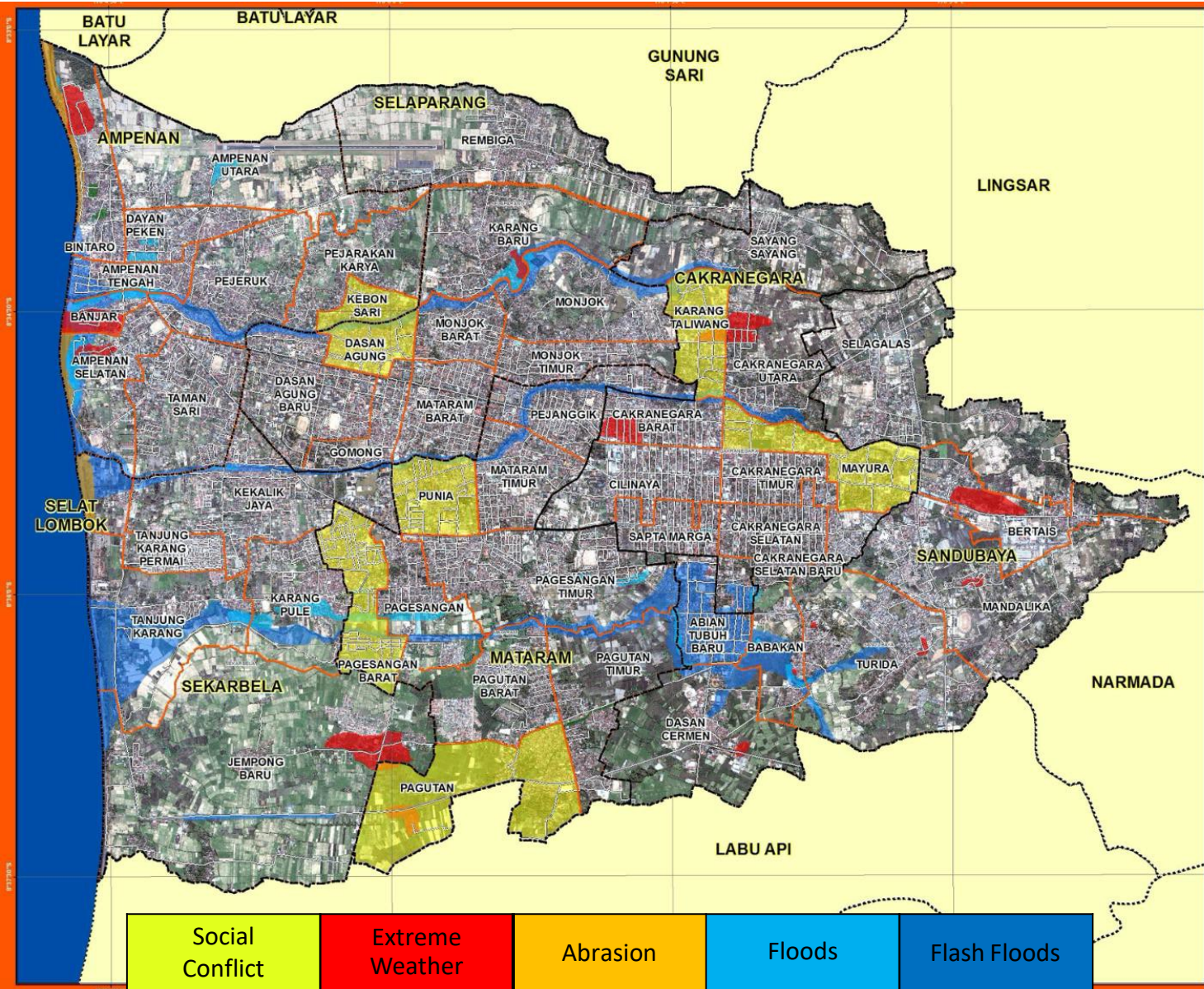




Floods, environmental degradation, solid waste:  
3 key disaster & climate change issues that plague Samarinda



# Mataram City



Social  
Conflict

Extreme  
Weather

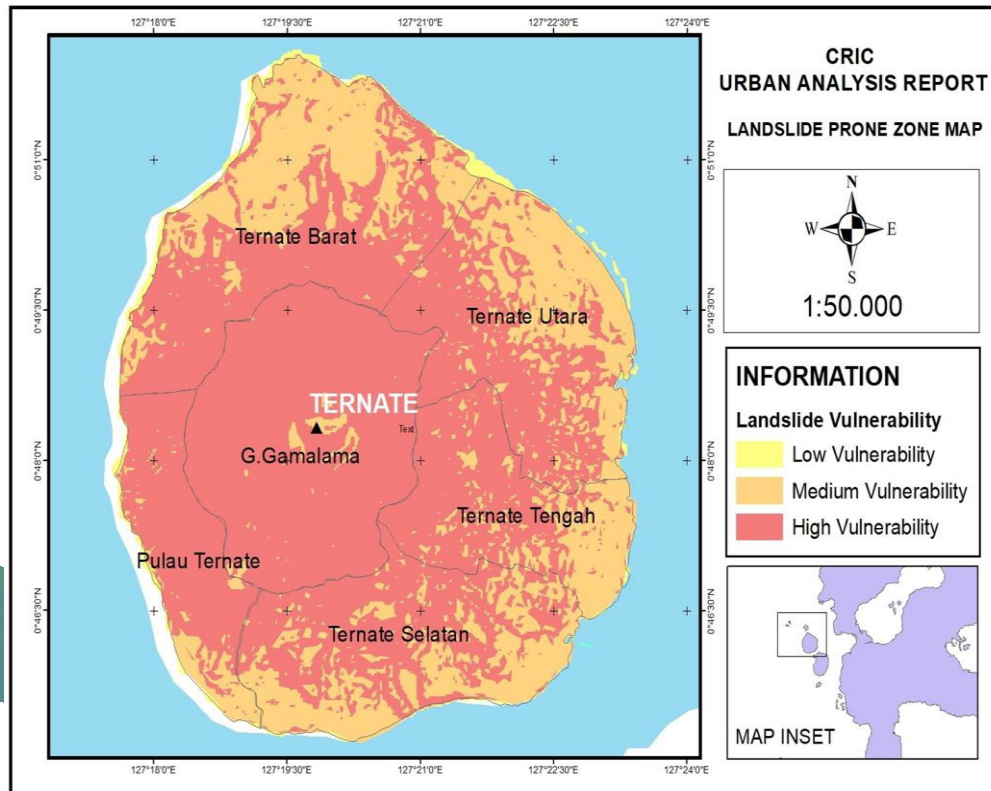
Abrasion

Floods

Flash Floods



# In Ternate Impacts of climate change is evident, but adaptation strategy is still limited





# Need for Key Strategies

---

- Require multi-stakeholders cooperation
- Need to work with the local community
- Need to embed adaptive design
- Work with smart technologies
- Needs are huge and urgent





Co-funded by the  
European Union



CLIMATE  
RESILIENT  
AND INCLUSIVE  
CITIES



United Cities and Local Governments  
Asia-Pacific

Thank you for your attention  
[www.resilient-cities.com](http://www.resilient-cities.com)

